



PIRINA
TECHNOLOGIES

PIRINA SML 1000

SAMPLEMAKING SOLUTION

**DESKTOP CREASING
AND CUTTING PLOTTER
WITH CAD/CAM LICENSE**

www.pirinatech.com

PIRINA SML 1000 SAMPLEMAKING PLOTTER

Pirina Samplmaking solution is a third generation cutting and creasing table with extremely powerful and flexible embedded software, allowing for creative design and as well for small runs of production. The Pirina solution is simultaneously high tech and cost effective machine, oriented towards the numerous design&advertisement studios, printing houses, packaging enterprises etc. that are building their businesses on the competitiveness in innovation, creativity in design, form and materials.

Pirina Sampelmaking solution is designed as a desktop and office-environment compatible machine - that requires minimum of work-space. It is easy to install and set-up, ready for production in less than two days after delivery.

The powerful integration between the cutting and creasing table and the award winning EngView Package Designer CAD/CAM system creates a perfect complete solution for any business in the Printing, Packaging and Advertisement. All creative ideas can be materialized in few short and easy steps. Simplicity and flexibility are the key words for Pirina solution.

Although one of the smallest in size on the market, Pirina plotter is ready to process sheet materials with thickness from 0,1 mm to 10 mm, with different rigidity and texture. The materials that can be processed with Pirina vary from sticker papers, through standard packaging cartons and corrugated to corks, foam boards, plastic corrugated, some sheet plastic materials (PVC, polycarbonate etc.), gasket materials, some textiles etc.

Recently, some unique scenarios for complex embossing and high quality creasing with special counter plate underlay were added, so that Pirina Solution became a very powerful tool for designers' creativity.

■ TECHNICAL SPECIFICATIONS

Table	1000 x 700 mm
Maximum job size with rotation/shifting of the sheet (CAM based feature)	1000 x 1400 mm
Working speed (regulated)	0-500 mm/sec
Programmable increment	0.1 mm
Material fastening	2 zone vacuum table
Control unit	embedded PC104 with OS, touch screen user interface
Networking	LAN, COM
Memory	2 GB
Overall dimensions	1500 x 1100 x 500 mm
Weight	100 kg
Power supply	110 – 240 V, 50/60 Hz, 500 W
Pneumatic supply	external compressor 0,6 Mpa, 5 l/ min

Touch Screen Control Unit with friendly and simple interface

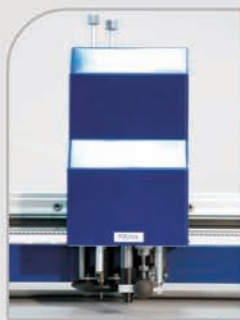


PIRINA SML 1000 EQUIPMENT

2-3

OSCILLATING TOOLHEAD

- Cutting tool: Tangential, oscillating, floating
- Cutting depth: adjustable 0-10 mm
- Vertical tool force: adjustable, max 100N
- Blades (replaceable): flat blade, HSS Hard steel blade
- Creasing tool: Tangential, floating
- Creasing wheel types: 2 pts, 3 pts, specialized for corrugated
- Vertical tool force: adjustable, max 100N
- Drawing pen: replaceable, floating
- Light marker for positioning

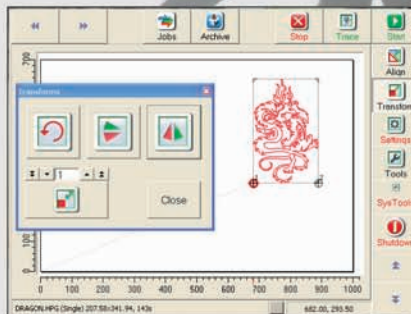


NON-OSCILLATING TOOLHEAD

- Cutting tool: Tangential, non-oscillating, floating
- Cutting depth: adjustable 0-2 mm
- Vertical tool force: adjustable, max 100N
- Blades (replaceable): flat blade
- Creasing tool: Tangential, floating
- Creasing wheel types: 2 pts, 3 pts
- Vertical tool force: adjustable, max 100N
- Drawing pen: replaceable, floating
- Light marker for positioning



Touch screen control unit with easy-to-use interface for controlling the positioning and work of the toolhead over the working area. The machine software offers some unique features, adding flexibility and speed in working, positioning over printed image, fine settings of the working area, tools, network settings, etc., some basic transformation features (mirror, rotation, scale), access to memorized files with preview etc.



EngView PACKAGE DESIGNER

EngView Package Designer CAD/CAM software is a key component in Pirina Solution.

The powerful combination between plotter machine and CAD/CAM software provides for a smart and affordable platform for sheet material design and samplemaking.

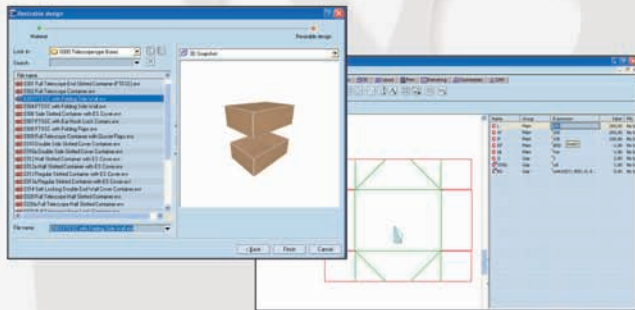
Pirina Solution is standarty offered with 4 basic EngView modules:

- Drafting + Library of standarts (FEFCO, ECMA, ENGView and others),
- 3D Viewer
- Layout Module
- CAM Module

DRAFTING

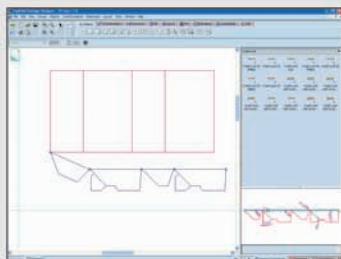
In this module the user may adopt one of three major work scenarios...

1. Start working with comprehensive and rich library of over 1500 ready FEFCO, ECMA and EngView standarts...



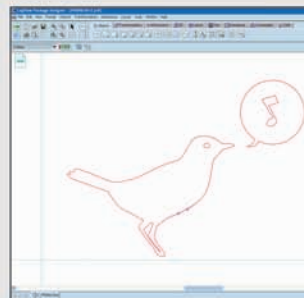
Just open the standart you need, resize and ...cut it.

2. Create his own structure using rich library of resizable Drag & Drop components and standart set of drafting tools and features...



3. The user can import his own structure created in other program.

Give the drawing appropriate cutting and creasing style and ...cut it.



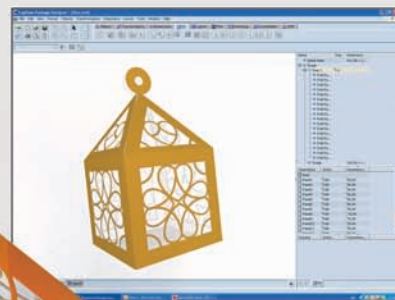
3D VIEWER

This spectacular and useful feature provides user with option to "see" the result of one's work before cutting...

Among the number of many strong features of this module, it's worth mentioning the following:

With 3D viewer users may:

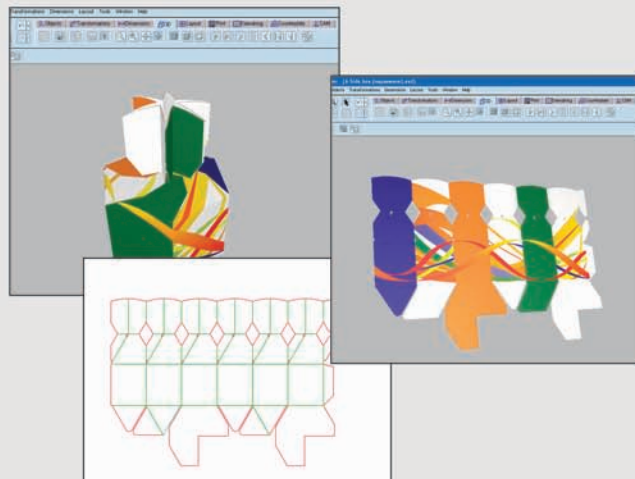
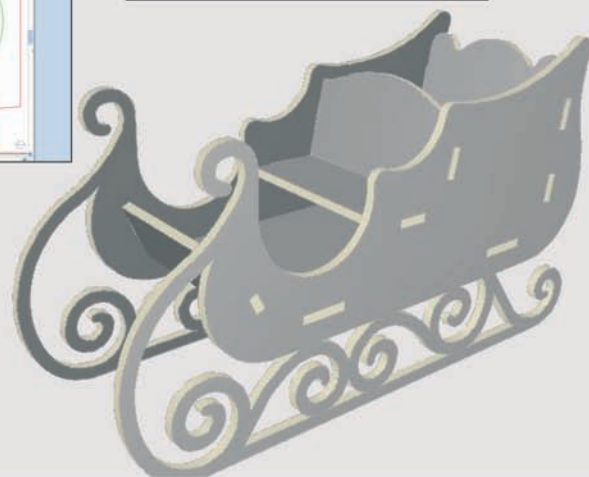
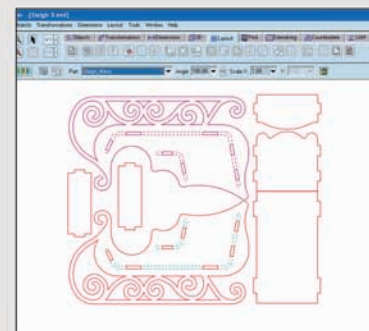
- get a visual idea of the material thickness
- change the surfaces of materials and their colours.
- create and add into the library his own material and surface.
- import an image into the structure...
- create folding sequence of structure
- export 3D animated pdf-file, including folding sequence, print image and construction of complicated structures (like displays)



CAM MODULE

Flexible and easy to use CAM module provides seamless control of the plotter. Some of its most powerful features are:

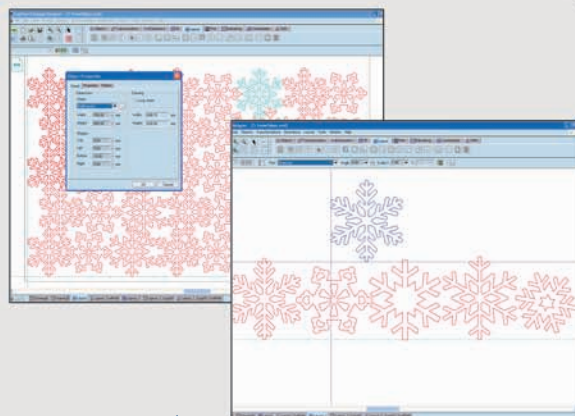
- possibility to support many different cam-templates related to processing of different materials. Control of tool speed, direction of work and sequence of instrument performance.
- programmable multiple repeating of crease lines, setting the work direction of crease-tool
- possibility to create double files, which expands the effective work zone of the plotter up to 1000 x 1400 mm
- creating of sample counters drawings. This feature allows for doing better the crease lines and also supports embossing techniques;
- CAM animation control – preview of the correct tool-path sequence



LAYOUT

This module enables user to optimize work and achieve minimum waste of available material and time. Here, by multiplying one structure or combining two or more different drawings, one integrated cam-file can be created.

The plotter will start cutting all elements as one job without any need of further adjustment. Layout feature is powerful tool to prepare specific sheets ready for serial production.

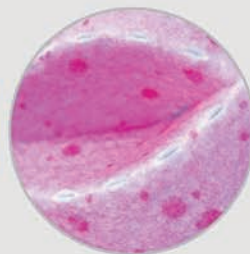




A COST EFFECTIVE SOLUTION FOR SAMPLEMAKING... AND MUCH MORE

Do not accept PIRINA as just another samplemaker, typical for the large scale industry.

This is a tool enabling creativity and increasing competitiveness in any design and art related business. In the same time it covers most of the features and work scenarios accepted as standard for the packaging industry.



Box materials:

*folding carton
cardboard 250 - 300 g*

*clear plastic sheet
masked with 1 mm felt*

EnDuro Ice 215g

*Cut:
tangential toolhead*

*Finishing:
embossing, PVC foil decoration, print*







Kiss-cut on self-adhesive PVC foil
Cut:
tangential toolhead
Decoration on plastic box



Material:
magnetic foil 0,7 mm masked with 1 mm felt
and 1 mm rubber
Cut: tangential toolhead



Pirina logo – kiss-cut
on flock material
Cut:
tangential toolhead



Technically speaking these also are boxes.
Or a pieces of decoration. The choice is yours.

Materials:
250g folding cardboard (red and metallic blue box), clear
PVC sheet, masked with transparent PVC selfadhesive foil
(transparent box).



3D airplane model
Material: 3 mm foam board
Cut: oscillating toolhead



Box
Material:
clear PVC sheet 0,3 mm,
masked with felt 1 mm.
Cut: tangential toolhead

3D Christmas Sleigh and Deer

Material: 3 mm foam board

Cut: oscillating toolhead



Easter Basket

Material:

1,5 mm corrugated, masked on both sides with selfadhesive PVC foil.



Annie and her classmates won the school's competition first prize for their project "My School" Material 5 mm foam cut with oscillating toolhead. Mom helped a little, of course.

Lace

270 g folding carton cardboard

Cut: tangential toolhead

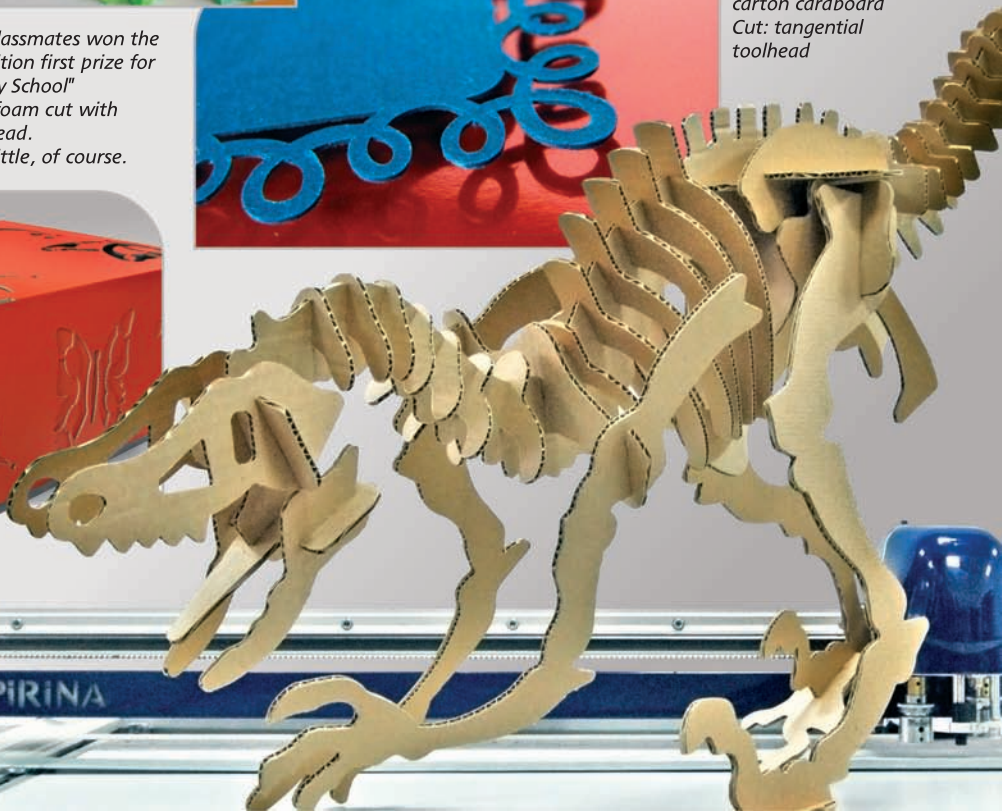


Box

Material:

1,5 mm corrugated cardboard, masked with self-adhesive pvc foil
Cut: oscillating toolhead

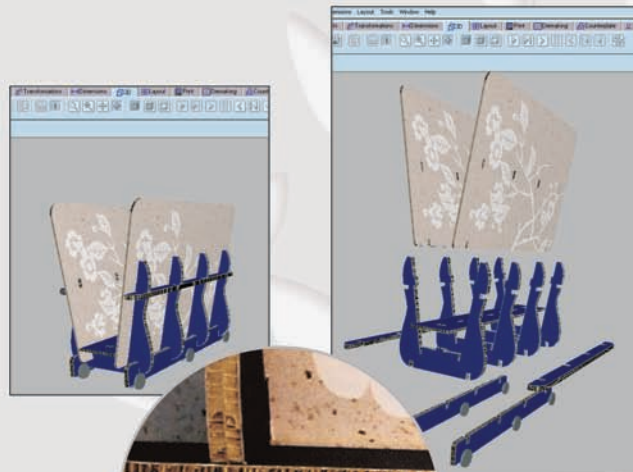
The fossils of this prahistoric dinosaur were cut from 1,5 mm corrugated material with tangential toolhead.





Plastic Box

This unusual container was made from 2,5 mm polypropylene corrugated material cut with tangential toolhead. Cutting of a structure that is larger than the table is enabled by a specific function in CAM-module of packaging software. This feature allows for seamless joining between two parts of the structure, cut as two consecutive jobs on the plotter. The result is one piece of packaging twice as big as the table size.



Cardboard material holder

*Used materials: 10 mm inverted corrugated board decorated with printed PVC foil
Cut: oscillating toolhead
ICB material becomes extremely popular and preferred for the purposes of decoration and advertisement. A numerous attractive and durable displays and other structures can be made with this material.*

PIRINA VIDEOS

10-11



Just few more ideas...



Non-oscillating cutting



Oscillating cutting



**More PIRINA Plotter videos
on www.pirinatech.com**

CUSTOMER QUOTES

"This is a great machine. We are digital printers based in Georgia. We own 3 HP Indigo presses. Digital printing and Pirina cutting and folding capabilities makes perfect combination for short run jobs, not just for sampling. Our Pirina works around 10 hours a day and we produce all sorts of boxes, CD sleeves, different cut out covers for brochures, invitations etc. With proper pricing this machine is real money maker."

Lasha Sokhadze, General Manager, DEGAPRINT LTD.

"Yes its really working well! We are busy with a project now for 800 boxes. It really makes life a lot easier!"

Gail Cupido, BAT South Africa

"We use the Pirina solution in our work:
- To offer to our customers variety of designs
- As an opportunity for fast correction - changing the type and
dimentions of the packages
- Production of realistic samples
Operating the plotter is convenient, fast and easy."

*Boian Dochev, Manager
Velpaks, Ruse, Bulgaria*

Pirina Technologies Corp.

Tsarigradsko Shosse Blvd., 7 km, ZIT Corp.1, Entr. B
1784 Sofia, Bulgaria

Tel: 00359 2 974 3430
Fax: 00359 2 974 0308
Mobile: 00359 888 929 738
e-mail: sales@pirinatech.com

