



## *Setting Network Connection*

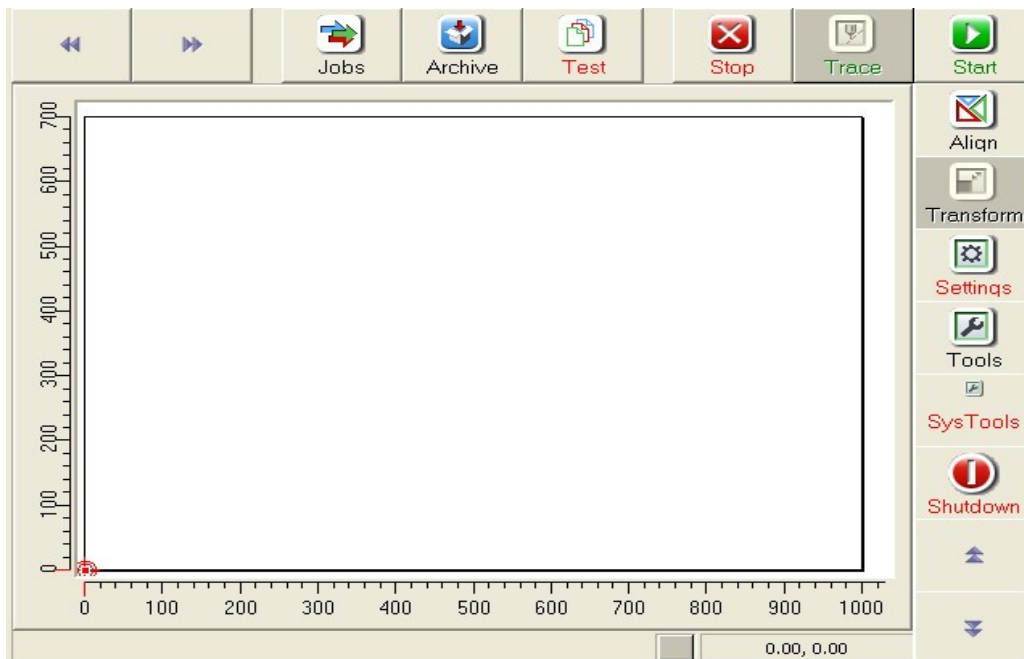
You need to set up an IP address of the plotter in order to access in through your local network. Contact your network administrator to set up the IP address and for the needed network access data. When you have the information, connect a keyboard to the back panel of the machine, connect the plotter to the electrical grid and switch it on. The startup menu appears on the touchscreen.



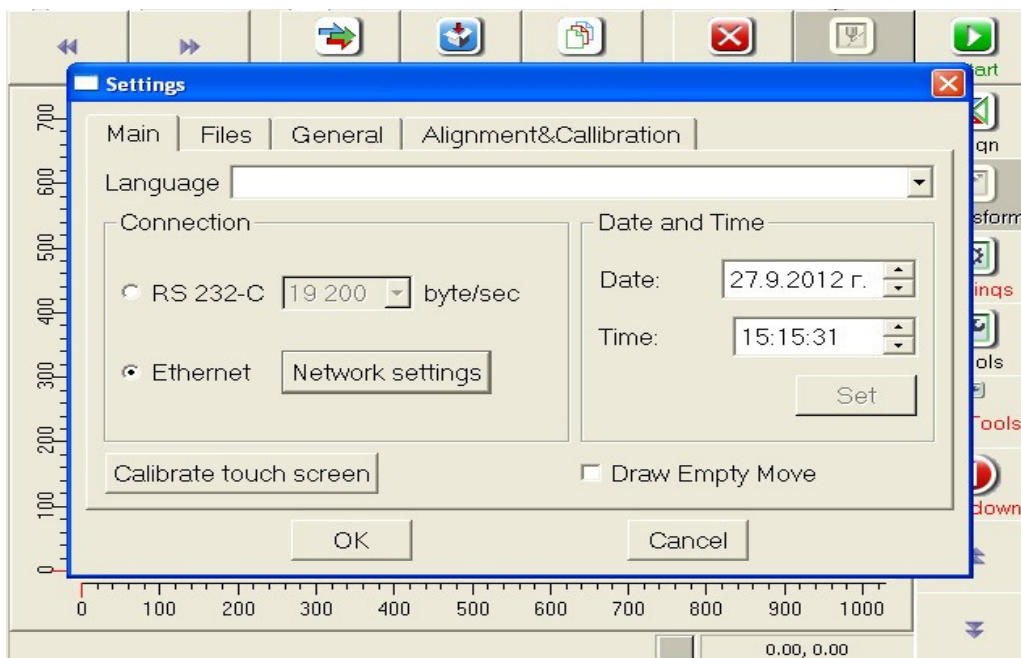
Press **F6** on the keyboard to go to **System mode**



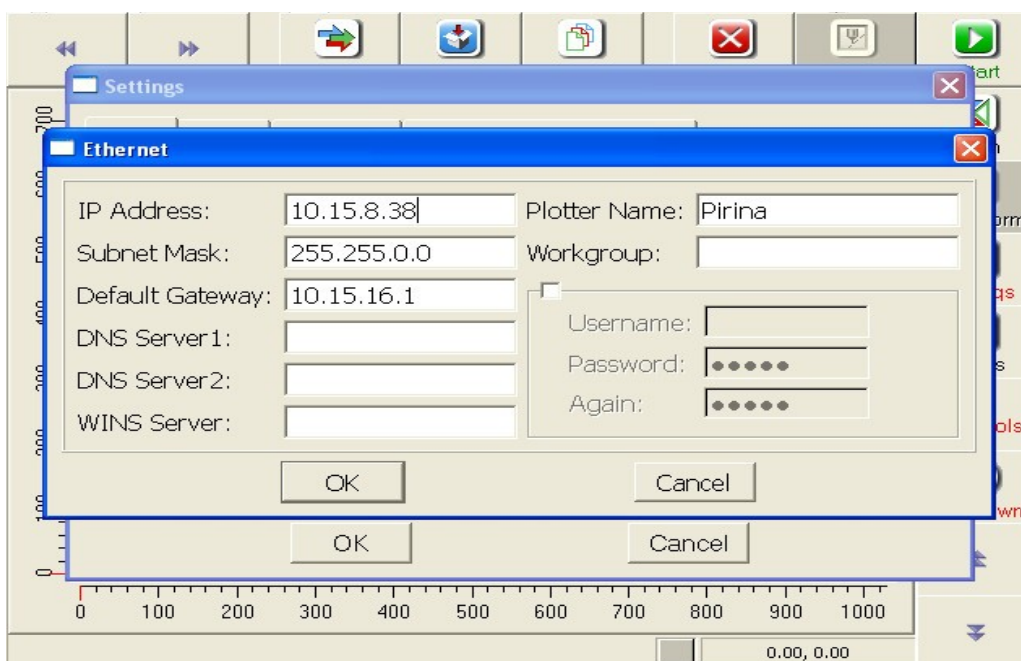
Press the **System Mode** button to go to the system menu of the plotter



Press the **Settings** button



Select **Ethernet** and press the **Network settings** button



Fill in the mandatory fields **IP Address**, **Subnet Mask**, **Default Gateway** and **Plotter Name** with the data given to you by your network administrator. All other fields in this dialog window are

optional.

Press the **OK** button and plug the network cable to the back panel of the plotter.

You need the IP address in order to access the plotter via your local network and upload .hpg files to be executed. Put the hpg files in the jobs folder of the plotter

