

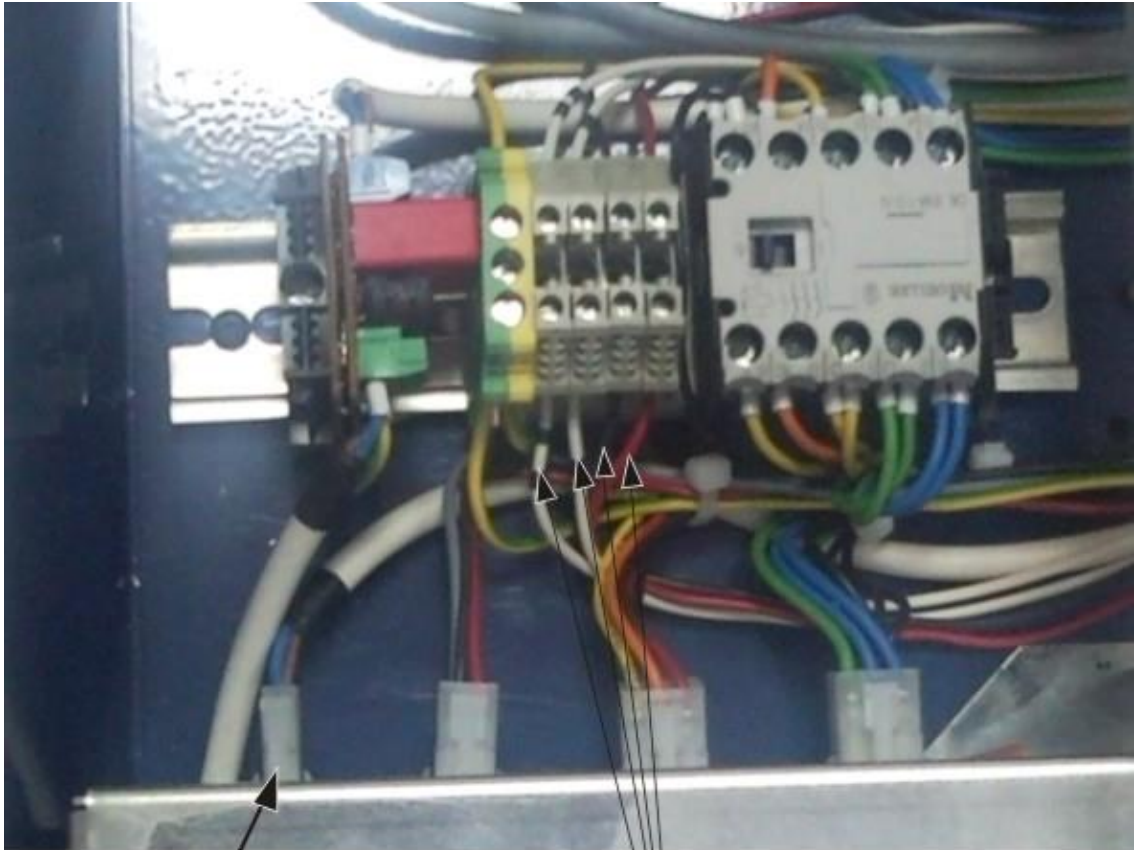
Dismounting and mounting of the vacuum table

1. Remove the both side covers from the machine. There are several little screws on each cover.
2. Unscrew the four screws below of the four corners of the vacuum table. Remember the place of the each spacer, corresponding to each corner of the table. Do not change the places of the spacers!
3. Remove the rear upper cover.
4. Unscrew the electro cables for the fans from the terminal block (see picture below). Note the place of each wire.
5. Place the moving bridge Y in rear position (max Y)
6. Lift up the front side of the vacuum table and unplug the pneumatic hose form the fitting.
7. Pick up carefully the vacuum table holding the both sides of it. Remove it, protecting the cables. Turn over the vacuum table and put it in a horizontal position on another table. Do not put the table on the fans side.

The mounting of the table is accomplishing in reverse direction.
Keep the places of the spacers and the electro connection.

Mounting the support units.

1. Remove the vacuum table.
2. Insert the nuts in the under grooves of the front and rear bars of the frame. The nut in the front bar must be to the side of the operator panel, near to the console holding middle of the under cover. The nut in the rear bar must be in the middle of the bar. See the drawings in the two attached PDF files.
3. Tighten the support plates to the bars with M6 screws.
4. Release the M8 nuts and unscrew down the M8 screws.
5. Mount back the vacuum table.
6. Screw up the M8 screws to touch the table and adjust the flatness of the table below of 0.5mm. Lock M8 screws with the nuts.
7. Measure: The difference of the distance between table surface and under surface of the tool head must be max 0.5mm in all area of the table.



AC

wires